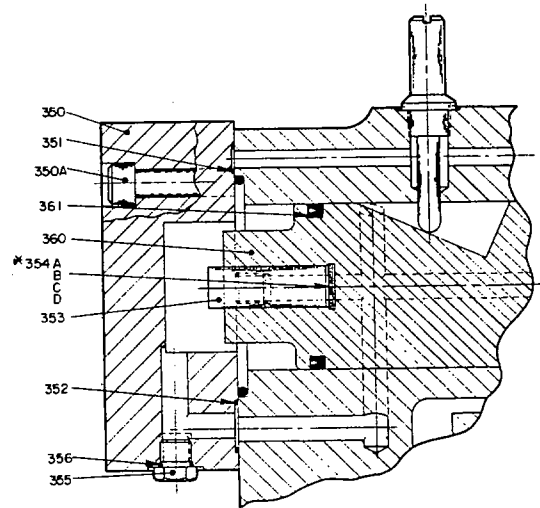
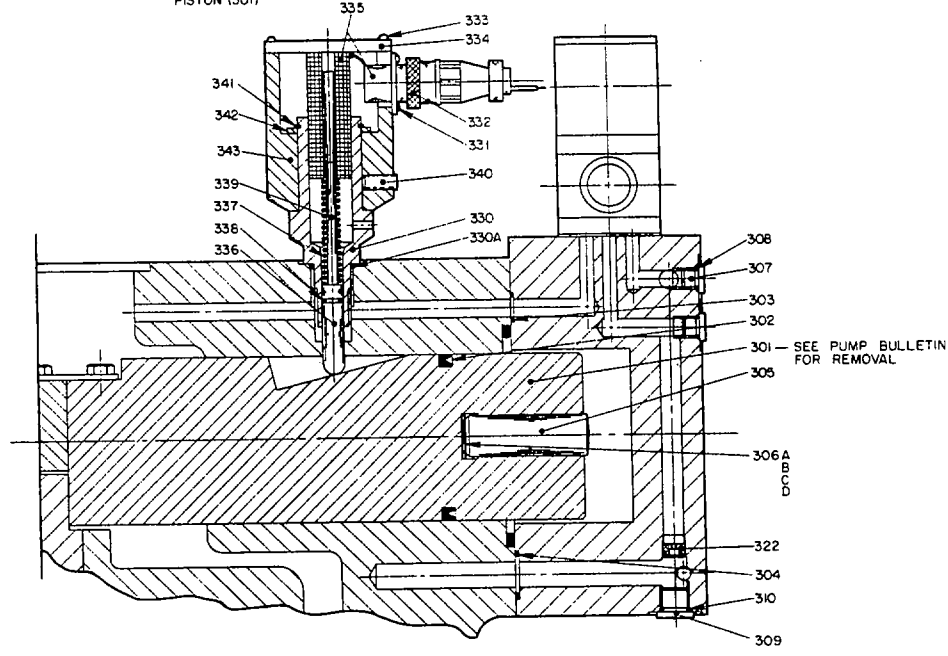


# TYPE "V-U" CONTROL FOR OILGEAR "PVL" PUMPS



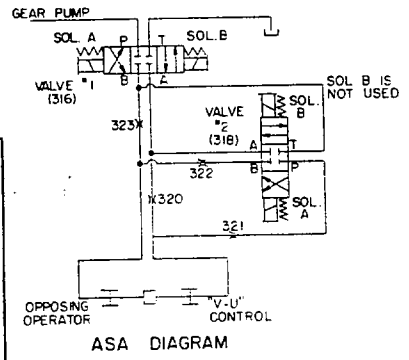
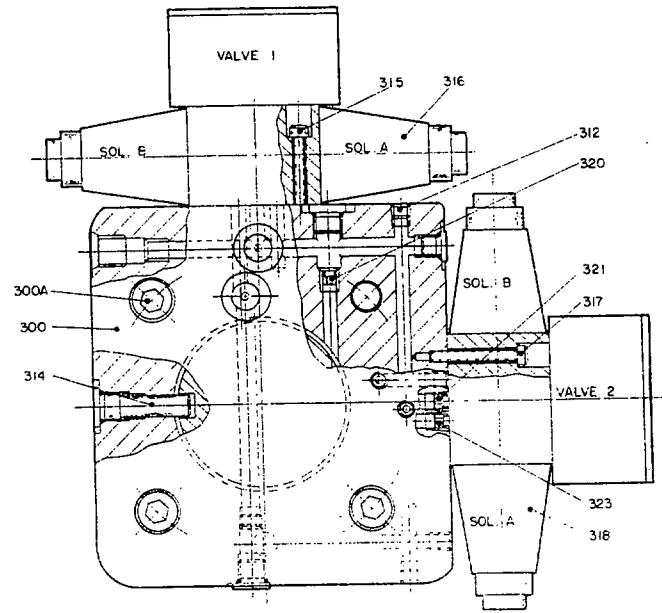
PRINTED IN U.S.A.

REMOVE L.V.D.T. ASSEMBLY  
BEFORE REMOVING CONTROL  
PISTON (301)



OPPOSING OPERATOR

\* SHIM FOR  
OBO STROKE



ASA DIAGRAM

TR.	DR. TF.	CH.	APP.
PARTS DRAWING - TYPE "V-U"			
CONTROL FOR "PVL" PUMPS			
510028			

ISSUED JUNE 1976

THE OILGEAR COMPANY  
MILWAUKEE, WISCONSIN, U.S.A. 53219

DS-947776



PARTS LIST  
TYPE "V-U" CONTROL FOR OILGEAR "PVL" PUMPS

<u>ITEM NO.</u>	<u>DESCRIPTION</u>	<u>ITEM NO.</u>	<u>DESCRIPTION</u>
300	Housing, Control	330A	Seal, O-ring
300A	Screw, Cap	331	Screw, Machine
301	Piston, Control	332	Assembly, LVDT Conn. -Cable
302	Packing, Block Vee	333	Screw, Cap
303	Seal, O-ring	334	Cover
304	Seal, O-ring	335	LVDT W/Receptacle
305	Pin, Push	336	Stem, Stroke Indicator
306A	Shim, 0.003	337	Spring, LVDT
306B	Shim, 0.015	338	Ring, Quad
306C	Shim, 0.062	339	Stem, LVDT
306D	Shim, 0.005	340	Screw, Set
307	Plug, Hollow Hex.	341	Ring, Retaining
308	Seal, O-ring	342	Washer
309	Plug, Hollow Hex.	343	Enclosure, LVDT
310	Seal, O-ring	350	Housing, Opposing Operator
312	Plug, Pipe	350A	Screw, Cap
314	Pin, Dowel	351	Seal, O-ring
315	Screw, Cap	352	Seal, O-ring
316	Valve, Sol. Oper. Spring Centered 4-Way	353	Pin, Push
317	Screw, Cap	354A	Shim, 0.003
318	Valve, Sol. Oper. Spring Centered 4-Way	354B	Shim, 0.015
		354C	Shim, 0.062
		354D	Shim, 0.005
320	Plug, Orifice	355	Plug, SAE
321	Plug, Orifice	356	Seal, O-ring
322	Plug, Orifice	360	Piston, Opposing Operator
323	Plug, Orifice	361	Packing, Block Vee
330	Guide, Stem		

O-RING SIZES  
(Cross Section x O.D. - Duro + 5)

<u>ITEM NO.</u>		
303	1/16 x 1/2	70
304	3/32 x 7/8	70
308	ARP 903	70
310	ARP 905	70
330A	ARP 908	70
351	1/16 x 1/2	70
352	3/32 x 7/8	70
356	ARP 906	70

Parts used in this assembly are per Oilgear specifications. Use Oilgear parts to insure compatibility with assembly requirements. When ordering parts, be sure to specify type designation, serial number stamped on nameplate, data sheet (DS) number, and item number. Specify type of hydraulic fluid used for packings and seals.