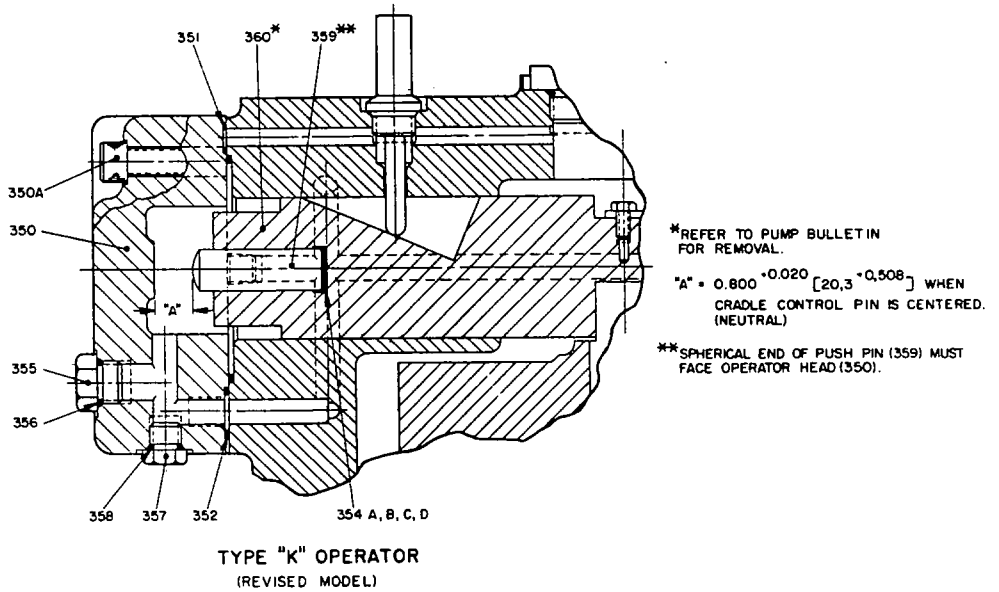
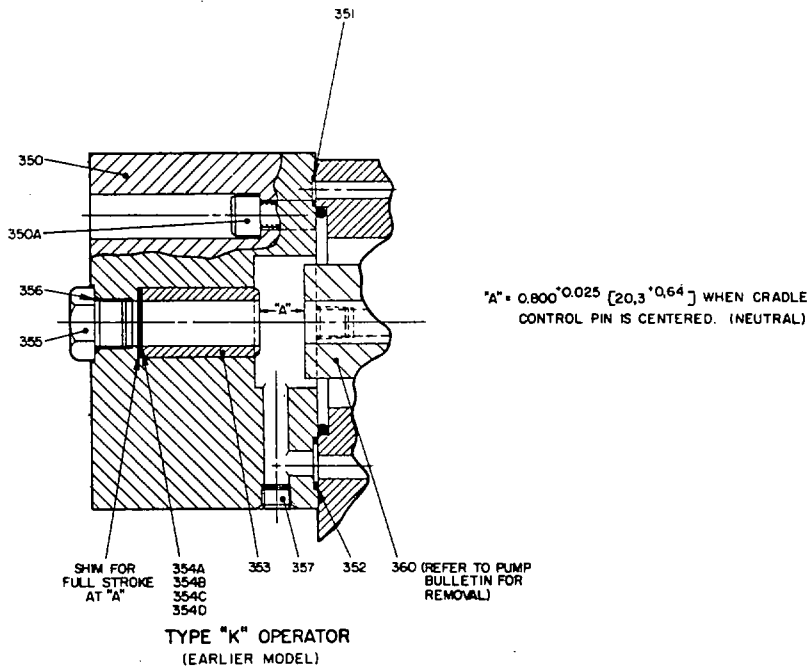


OPPOSING OPERATORS FOR OILGEAR "PVL" PUMPS



PARTS DRAWING, OPPOSING OPERATORS FOR "PVL" PUMPS	
DR. TP	CH.
TR.	APP.
509730B	

REISSUED JULY 1982

THE OILGEAR COMPANY
MILWAUKEE, WISCONSIN, U.S.A. 53219

DS-947087B

PRINTED IN U.S.A.

PARTS LIST

TYPE "K" OPPOSING OPERATORS for "PVL" PUMPS

PARTS USED IN THIS ASSEMBLY ARE PER OILGEAR SPECIFICATIONS. USE ORIGINAL OILGEAR PARTS TO ENSURE COMPATIBILITY WITH ASSEMBLY REQUIREMENTS. WHEN ORDERING PARTS, SPECIFY TYPE DESIGNATION, UNIT SERIAL NUMBER OR "L" NUMBER, ITEM NUMBER ON DATA SHEET (DS) AND DATA SHEET NUMBER. ALSO SPECIFY HYDRAULIC FLUID TYPE.

EARLIER MODEL

ITEM	DESCRIPTION
350	Head, Operator
350A	Screw, SHC
(S)351	O-ring
(S)352	O-ring
353	Spacer
354A	Shim, .003"
354B	Shim, .005"
354C	Shim, .015"
354D	Shim, .062"
355	Plug, Pipe
(S)356	O-ring
357	Plug, Flushseal
360	Piston, Adj. (Sizes 170 & 250) Piston, Control bias (Size 075)

REVISED MODEL

ITEM	DESCRIPTION
350	Head, Operator
350A	Screw, SHC
(S)351	O-ring
(S)352	O-ring
354A	Shim, .003"
354B	Shim, .005"
354C	Shim, .015"
354D	Shim, .062"
355	Plug, SAE
(S)356	O-ring
357	Plug, SAE
(S)358	O-ring
359	Pin, Push
360	Piston, Bias control

(S) INCLUDED IN TYPE "A" SEAL KIT.

O- RING SIZES			
ITEM	(Cross Section x O.D. Duro \pm 5)		
351	1/6 x	9/16	70
352	3/32 x	7 1/8	70
356	910 ARP		70

O-RING SIZES			
ITEM	(Cross Section x O.D. Duro \pm 5)		
351	1/16 x	1/2	70
352	3/32 x	7/8	70
356	908 ARP		70
358	906 ARP		70